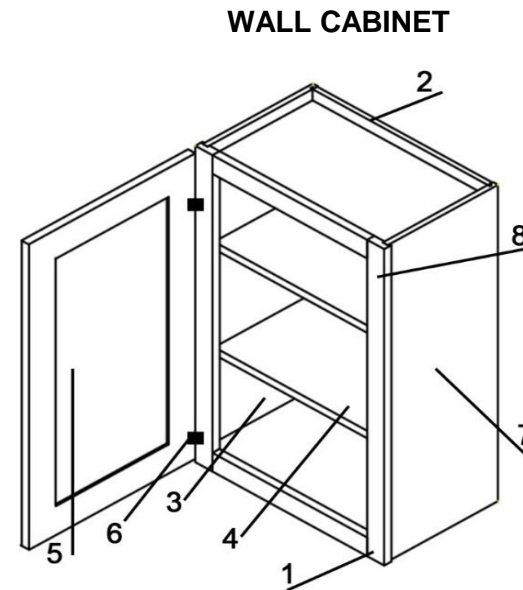
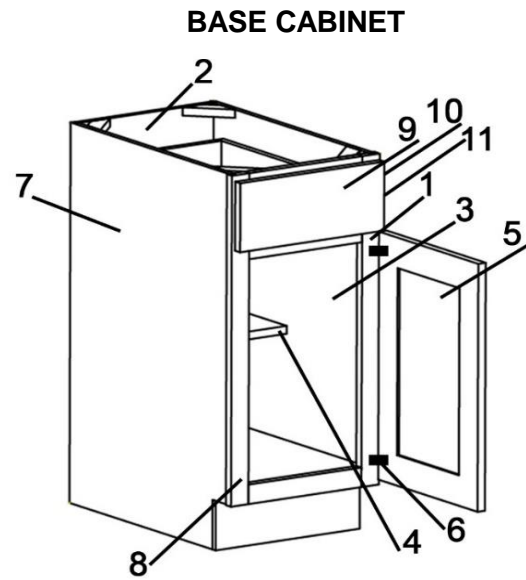


## CABINET SPECIFICATIONS FOR MIDLAND



### MIDLAND SERIES

1. 3/4" x 1 1/2" HARDWOOD FACE FRAMES WITH GLUED AND POCKET SCREWED JOINTS.
2. 3/8" PARTICLE BOARD BACK WITH MAPLE PRINT INTERIOR.
3. 3/8" PARTICLE BOARD SIDES, TOPS AND BOTTOMS, WITH MAPLE PRINT INTERIOR.
4. 5/8" PARTICLE BOARD SHELVING WITH A MAPLE PRINT ON BOTH SIDES AND ONE EDGE.  
ALL SHELVES ARE ADJUSTABLE WITH BASE CABINETS HAVING 1/2 DEPTH SHELVES,  
SUPPORTED BY SHELF CLIPS.
5. DOOR STYLE  
PLEASE REFER TO THE DOOR STYLE PAGES 17-24 FOR ADDITIONAL INFORMATION.
6. ONE PIECE ADJUSTABLE HINGE.  
DOOR UPGRADE OPTION:  
1. ADJUSTABLE SOFTCLOSE HINGE
7. CABINET ENDS:  
1. ENDS WILL BE CLOSELY MATCHING PRINT TO THE SELECTED FINISH COLOR.  
CLOSELY MATCHING PRINT IS NOT AVAILABLE WITH GRAPHITE, NAVAL AND SLATE BLUE.  
2. OPTIONAL ATTACHED FINISHED END SKINS MAY BE ADDED TO THE CABINET.
8. STANDARD FINISH CONSISTS OF NON WIPING STAIN, A COAT OF SELF SEALING CONVERSION VARNISH & A  
TOP COAT OF CONVERSION VARNISH. FINISH THICKNESS APPROXIMATELY 7 MIL. WET.
9. 3/4" HARDWOOD DRAWER FRONTS, PAINTED MAPLE WILL BE 3/4" HDF FRONTS.
10. SELF ADJUSTING EPOXY COATED 3/4 EXTENSION SIDE MOUNT DRAWER GUIDES.  
**TRACK UPGRADE OPTION:**  
1. UPGRADE TO A BLUM 7/8 EXTENSION UNDERMOUNT SOFT CLOSE TRACK  
(DOES NOT INCLUDE 5/8" SOLID HARDWOOD DOVETAIL DRAWER BOX)
11. DRAWER BOX - 1/2" RABBETED PLYWOOD DRAWER WITH 1/4" FLOOR, AND 3/4 EXTENSION SIDE MOUNT.  
**DRAWER UPGRADE OPTION:**  
1. 5/8" SOLID HARDWOOD DOVETAIL DRAWER BOX WITH BLUM 7/8 EXTENSION UNDERMOUNT SOFT CLOSE  
TRACK

**KCMA CERTIFIED  
MEETS KCMA ESP STANDARD  
C.A.R.B. PHASE II COMPLIANT**